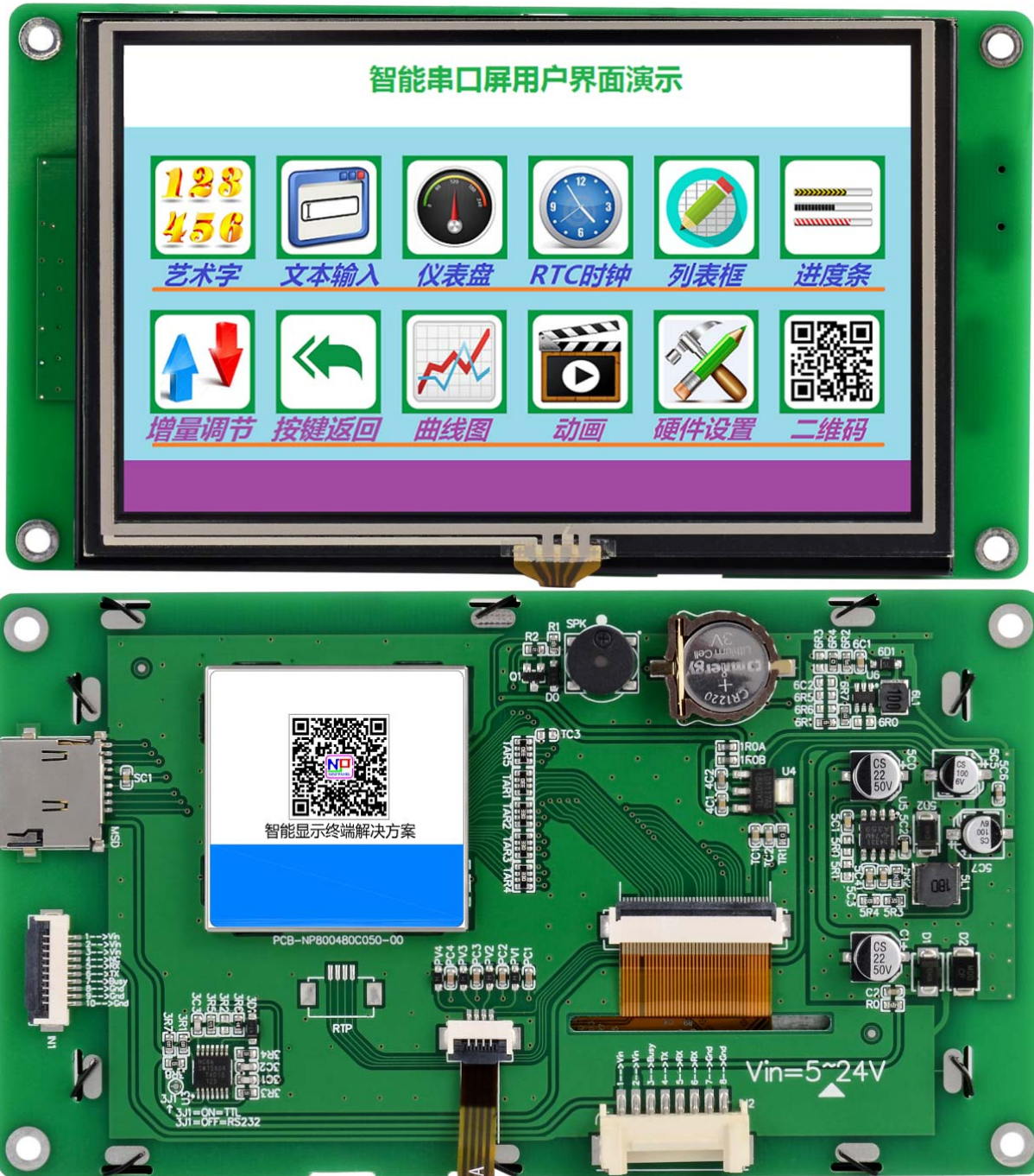


Specification For Configuration Smart LCM

P800480C050_GASTR00

5.0 inch, 800*480 Pixels, 65K color



DATE	DESCRIPTION
2018-2-14	First release

➤ **DISPLAY CHARACTERISTICS**

Item	Contents	Note
Color	65K (65536) color	16bit Palette 5R6G5B
Active area (L*W)	108.0 mm(L)×64.8 mm(W)	
viewing area (L*W)	109.6 mm(L)×66.4 mm(W)	
Resolution(H*V)	800×480 Pixels	
Back light type	LED	-
B/L brightness	350nit	64 levels of brightness adjustment

➤ **ELECTRICAL CHARACTERISTICS**

Item	Test Conditions	Min.	Typ.	Max.	Unit
Power supply voltage	-	5.0	12	24.0	V
Power supply current	VCC = +12V , Maximum backlight brightness	-	180	-	mA
	VCC = +12V , Backlight off	-	100	-	mA

Recommend DC power supply : least 12V 1A DC Power

➤ **RELIABILITY CHARACTERISTICS**

Item	Test Conditions	Min.	Typ.	Max.	Unit
Operation temperature	12V@60%RH	-10	25	60	°C
Storage temperature	-	-20	25	70	°C
Humidity	25°C	10%	60%	90%	RH
Three-proof	-	-	NO	-	-
Aging time	-	-	NO	-	H

➤ **INTERFACE CHARACTERISTICS**

Item	Test Conditions	Min.	Typ.	Max.	Unit
UART baud rate	Standard	1200	115200	921600	bps
	Custom	1200	-	1000000	bps
UART output level (TXD、 BUSY)	Output 1 , Iout = 1mA	3.0	3.2	-	V
	Output 0 , Iout = -1mA	-	0.1	0.2	V
UART input level (RXD、 I/O)	Input 1 , Iin = 1mA	2.0	3.3	15.0	V
	Input 0 , Iin = -1mA	-0.7	0.0	1.3	V
UART mode	8N1 UART, CMOS/3.3V TTL				
User Interface Type	10Pin_1.0mm FFC , 8Pin_2.00mm				
USB interface	No				
SD card interface	Yes, FAT32 file format, Download/Update GUI Project via SD Card				

➤ **MEMORY CHARACTERISTICS**

Memory type	Item	Min.	Typ.	Max.	Unit
FLASH Memory	Total capacity		-	128	MB
	Font storage space	-	-	32	MB
	Full screen picture storage quantity	-	-	120	Picture

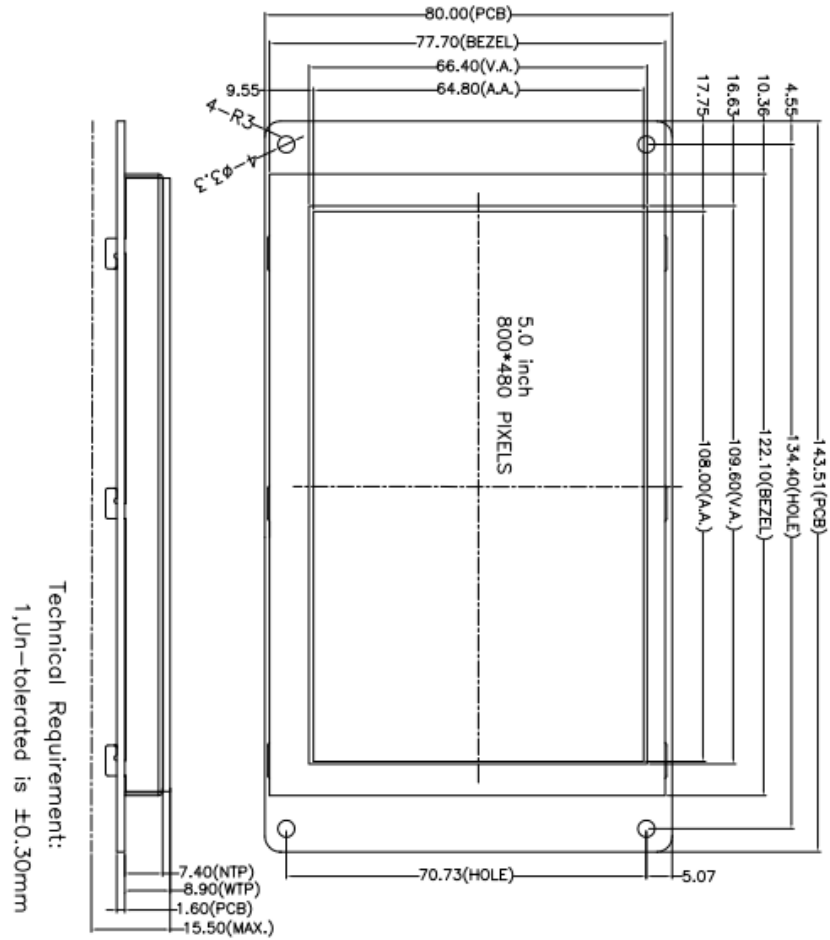
➤ **PERIPHERAL SUPPORT**

Peripheral	
Peripheral support	4-wire RTP, RTC, buzzer

➤ **INSTALLATION CHARACTERISTICS**

Item	
Module size (L*W*H)	143.51(L)×80.0 (W)×14.0(NH)/15.5(TH)mm
Net weight	145g

EXTERNAL DIMENSIONS (Unit mm, Un-tolerated ±0.3mm)



INPUT:	PIN No.	SYMBOL	Description
	1~3	Vin	Power supply input
	4	NC	Undefined
	5	Rx	RS232 data input
	6	Tx	RS232 data output
	7	Busy	Busy flag output
	8~10	Gnd	Ground

INPUT2:	PIN No.	SYMBOL	Description
	1~2	Vin	Power supply input
	3	Busy	Busy flag output
	4	Tx	RS232 data output
	5	Rx	RS232 data input
	6	Rx	RS232 data input
	7~8	Gnd	Ground

